



Contents

3	Introduction
4	Chocflex Features and Benefits
	The Chocflex Range
6	Bilbao
8	Cristal
10	Granito
12	Riga
14	Uni
16	Valencia
18	Vancouver
20	Stairtreads
22	Laying Chocflex Sheet
24	Laying Chocflex Tiles
26	Laying Chocflex Stairtreads
28	Watertight Tankings for Healthcare Environments
30	Cleaning and Maintenance
31	Chocflex Welding Rod
32	Resistance to Chemicals
33	Specifications

Seven co-ordinated ranges

Chocflex can be laid on its own or used to create your own unique flooring combinations from traditional to the truly radical!

Colours are common across each of the ranges. A colour from the solid range is the same as detail or pattern colours.

Each design reference is available in sheet format with a selection also available in tile format and stairtread.

All the Chocflex range reduces impact sound pressure levels. All reduce sound levels by 19dB when measured in accordance with BS EN ISO 140-8.

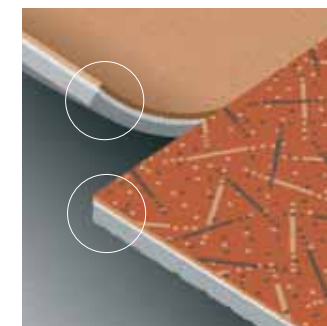


Solid colour range



Pattern colours ranges

- All designs and colourways are available in U3 and U4 classification.
- Thickness of tiles and sheet are identical.
- VITNET® soiling resistant treatment on all designs – eliminates the need for waxing.
- A co-ordinating range of designs and colourways.
- High levels of underfoot comfort, anti static properties and acoustic absorption.
- Ease of movement for wheeled traffic.
- Resistant to indentation.
- Product construction prevents fungal and bacterial growth.
- High impact resistant product.



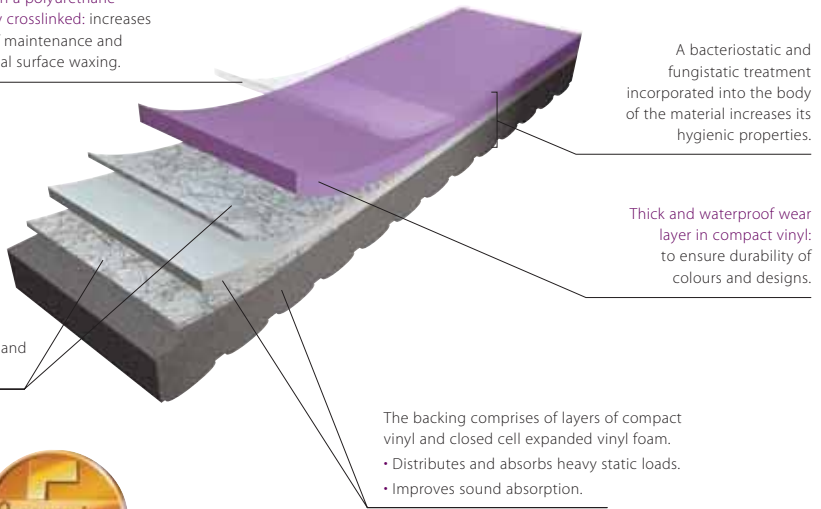
Chocflex® is compatible in height and colour with Flotex® and can be used together without the need for jointing strips.



Chocflex reduces sound impact and sound pressure levels

The **VITNET** treatment based on a polyurethane resin varnish, photochemically crosslinked: increases resistance to abrasion, ease of maintenance and negates the need for traditional surface waxing.

A non woven structure: to reinforce the floorcovering and provide dimensional stability.



Simply outstanding

Surface layer



Chocflex is suitable for areas with the most stringent of hygiene requirements. Treated with VITNET® soiling resisting treatment it provides a surface that is both easy to maintain and disinfect.

The dual surface layers provided a tough textured surface, which has high slip resisting properties. The top surface or wear layer is hygienic and easy to clean it is compatible with most detergents and cleaning products and can be used for areas where chemical spillage may be a problem.

The second surface layer ensures colour fastness and colour consistency even in the highest traffic areas.

The addition of antistatic elements allows Chocflex to retain a class 2 anti-static rating. Where safety is a key priority CHOCFLEX, with a coefficient of friction of 0.65, is the ideal choice.

- Resistant to scratches, abrasions and impact damage.
- Durable wear layer.
- Slip resisting – reduces the risk of slipping.
- Designed for high traffic areas.
- High levels of colour fastness.
- Easy to maintain.
- Compatible with most detergents and cleaning products.
- Anti static elements.



Backing layer

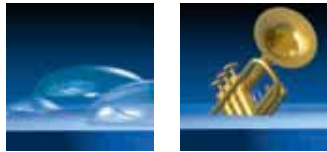


Totally waterproof and root proof, it can be wet cleaned thoroughly and frequently. Treated throughout with fungicidal and bacteriocidal chemicals it ensures resistance to microbial attack

Layers of close expanded vinyl foam reinforced with glass fibre absorb and evenly distribute loading across its surface. It also absorbs static loads and sudden shocks. After sudden impacts Chocflex regains its original shape.

It is ideal for areas where there is wheeled traffic. Chocflex is quiet, absorbent yet allows easy movement.

- Dimensionally stable.
- Waterproof from above and below.
- Fungicidal and bacteriocidal treatment.
- Reduced sound levels.
- Absorbs static loads and sudden shock impact.
 - High impact resistance.
 - Resists indentation.

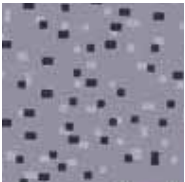




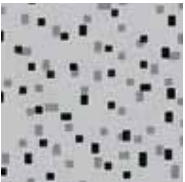
bilbao | Chocflex®



Noir Carbon 80371



Gris Tempete 80373



Nuage 80374



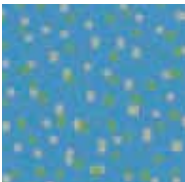
Mediterranee 80375



Mure 80377



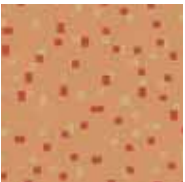
Framboise 80378



Lagon 80376



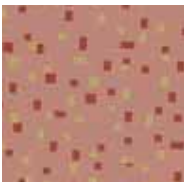
Santa Fé 80380



Peche 80381



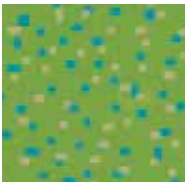
Chatain 80379



Cacaete 80382



Craie 80384



Vert Hit 80383

- Colourways available in Sheet format
- Colourways available in Tile format
- Colourways available in Stairtread format

PLEASE NOTE: Digital representations may vary from the actual product, please order a sample to see full effect.

Bilbao Vert Hit



cristal|Chocflex®



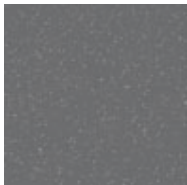
Midnight 65213



Pacific 65334



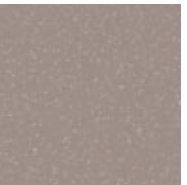
Conker 65330



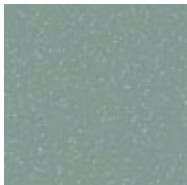
Quartz 65202



Spray 65332



Pumice 65331



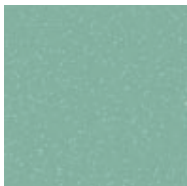
Cactus 65196



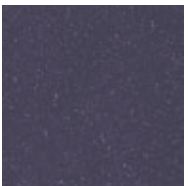
Mineral 65180



Linen 65329



Aloe 65333



Viole 65243

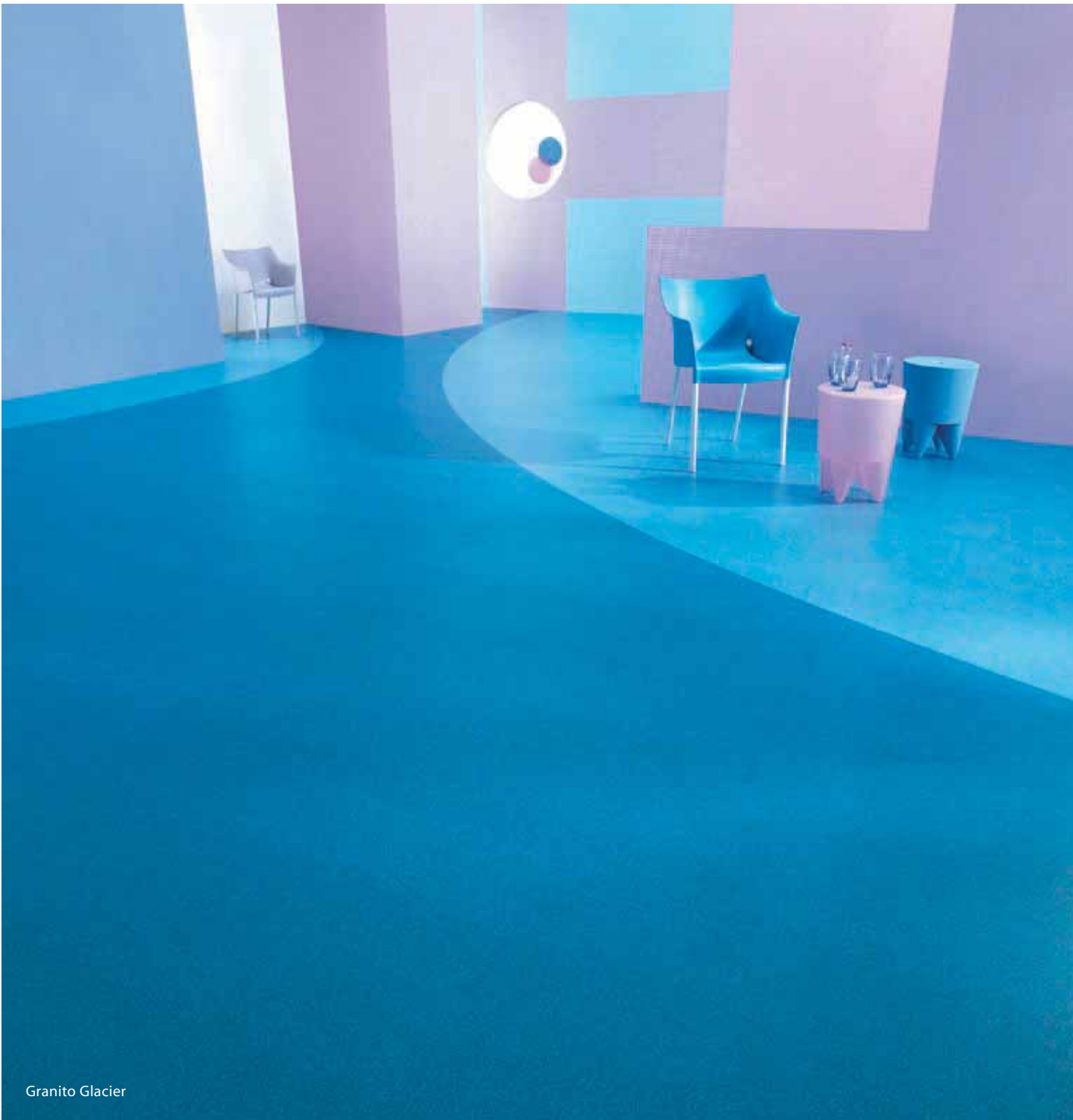


Soucis 65222

● Colourways available in Sheet format

PLEASE NOTE: Digital representations may vary from the actual product, please order a sample to see full effect.

granito | Chocflex®



Granito Glacier



Terracotta

52268



Mandarin

52310



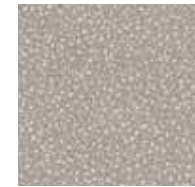
Alabaster

52308



Glass

52313



Mink

52263



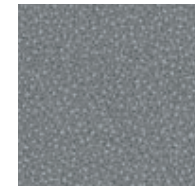
Sky

52265



Pale Grey

52271



Dark Grey

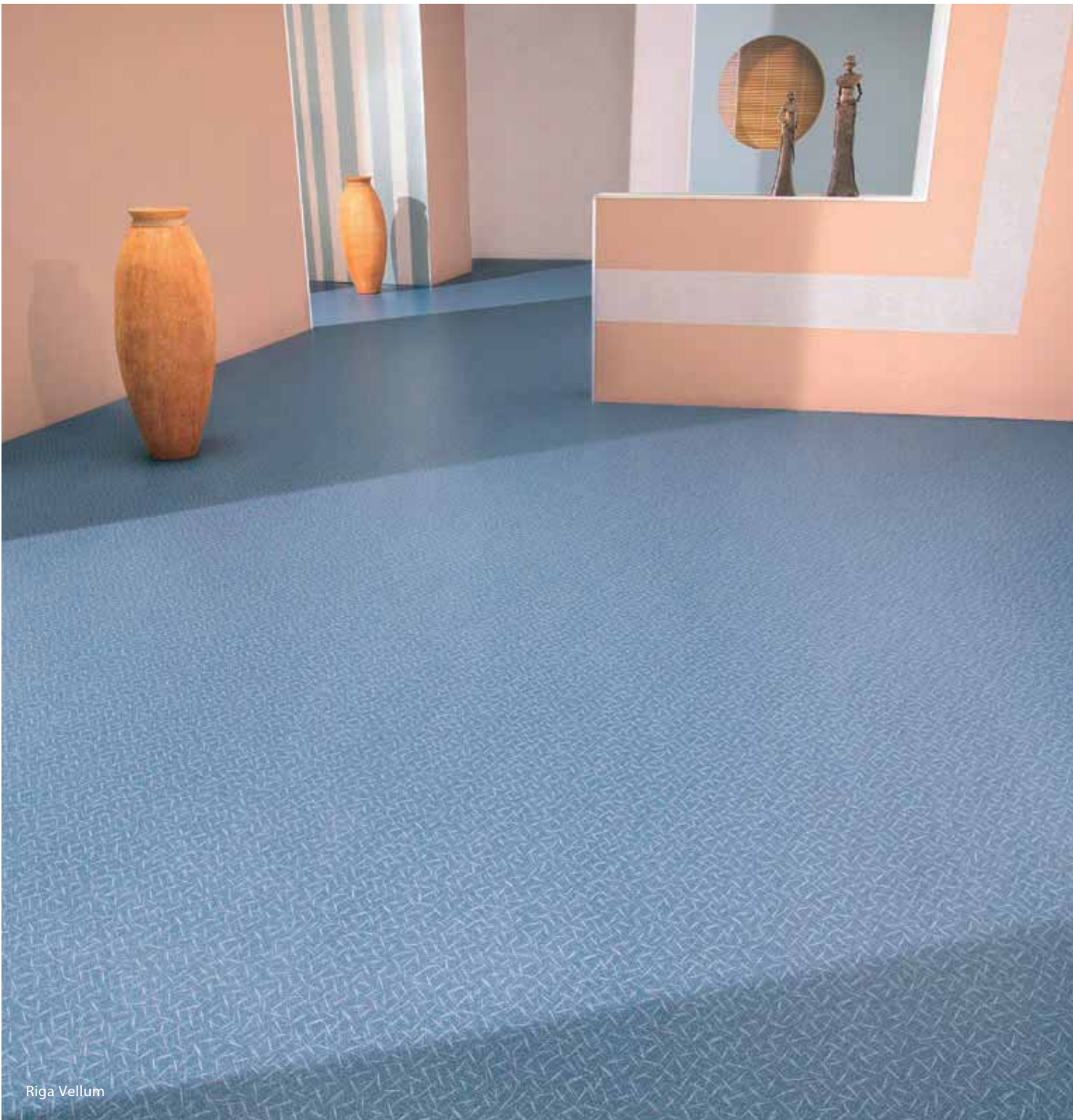
52270

● Colourways available in **Sheet** format

■ Colourways available in **Tile** format

■ Colourways available in **Stairtread** format

PLEASE NOTE: Digital representations may vary from the actual product, please order a sample to see full effect.

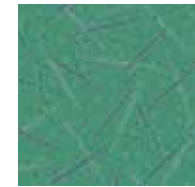


Riga Vellum



Rosehip

78359 ●



Hedgerow

78362 ●



Blueberry

78361 ●



Squash

78358 ●



Vellum

78360 ●



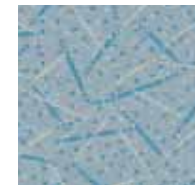
Quartz

78356 ●



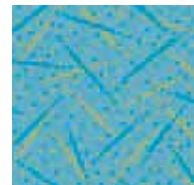
Desert

78357 ●



Banquise

78400 ●



Turquoise

78401 ●



Amethyst

78402 ●



Vert Flash

78403 ●

● Colourways available in Sheet format

PLEASE NOTE: Digital representations may vary from the actual product, please order a sample to see full effect.



Uni Poppy and Oatmeal

			
Poppy 50354 ● ■	Cinnibar 50342 ● ■	Ginger 50338 ● ■	Fudge 50341 ● ■
			
Custard 50340 ● ■	Canary 50337 ● ■	Rainforest 50350 ● ■	Verdigris 50345 ● ■
			
Lichen 50344 ● ■	Oatmeal 50339 ● ■ ■	Iris 50352 ● ■	Lake 50351 ● ■
			
Riviera 50348 ● ■	Lagoon 50349 ● ■	Grey 50208 ● ■ ■ ■	Lead 50353 ● ■
			
Black 50252 ● ■	Snowflake 50185 ● ■		

● Colourways available in **Sheet** format

■ Colourways available in **Tile** format

■ ■ ■ Colourways available in **Stairtread** format

PLEASE NOTE: Digital representations may vary from the actual product, please order a sample to see full effect.



Valencia Blue Glacier



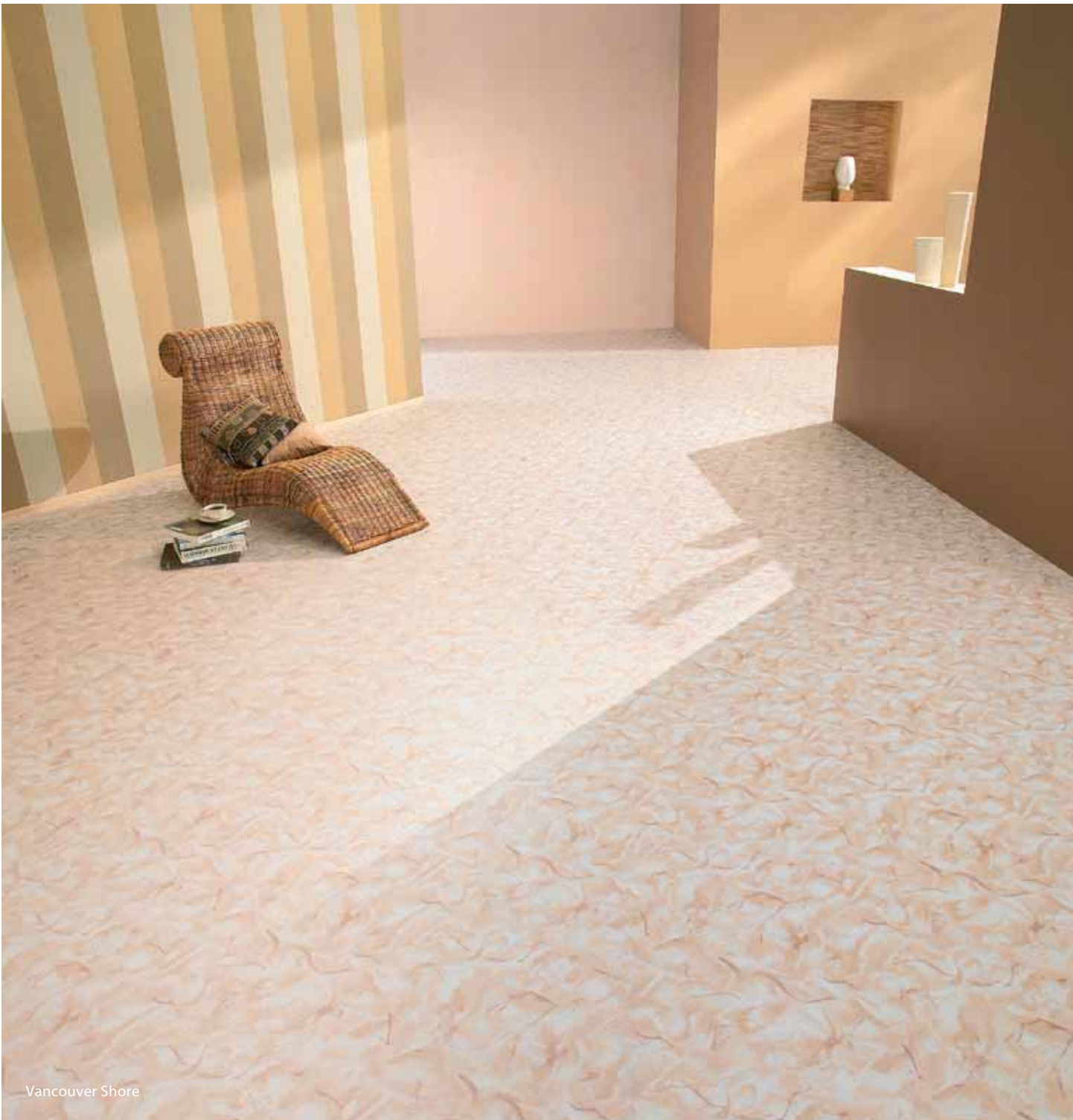
● Colourways available in **Sheet** format

■ Colourways available in **Tile** format

L Colourways available in **Stairtread** format

PLEASE NOTE: Digital representations may vary from the actual product, please order a sample to see full effect.

vancouver | Chocflex®



Vancouver Shore



Cedar

74307



Shore

74304



Mist

74305



Air

74306



● Colourways available in **Sheet** format

■ Colourways available in **Tile** format

└ Colourways available in **Stairtread** format

PLEASE NOTE: Digital representations may vary from the actual product, please order a sample to see full effect.



Vancouver Shore



Cedar

74307 ● ■ ■



Shore

74304 ● ■ ■ ■



Mist

74305 ● ■ ■ ■



Air

74306 ● ■ ■

Alternative layout

- Colourways available in **Sheet** format
- Colourways available in **Tile** format
- Colourways available in **Stairtread** format

PLEASE NOTE: Digital representations may vary from the actual product, please order a sample to see full effect.

stairtreads | Chocflex®

All stairtreads are available in 2 widths: 51cm & 101cm

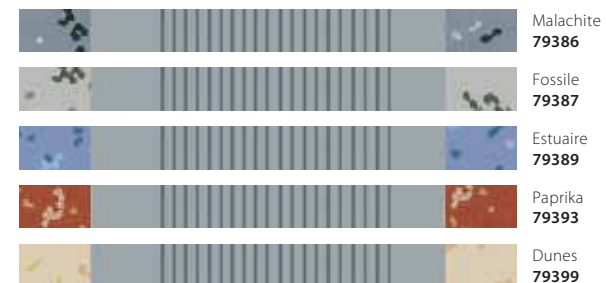
bilbao



uni



valencia



vancouver



Bilbao available in SHEET format. Uni, Valencia and Vancouver available in SHEET & TILE format. They are treated with VITNET® and are fungistatic & bacteriostatic.

PLEASE NOTE: Digital representations may vary from the actual product, please order a sample to see full effect.

Laying Chocflex Sheet

General

The material must be transported and stored vertically, and tiles must lie flat. Before starting work check whether the material comes from the same lot number and lay in ascending or descending numerical number, to ensure continuity. All sheets should be laid in the same direction. The seams should be parallel, directed away from the main source of light.

Preparing the laying surface

The sub-floor should be smooth, firm, level, compatible with the adhesive system and permanently dry. Refer to the national standard for installation of relevant floorcoverings type e.g. BS 8203.

Before laying sheets, the surface should be checked for its moisture content. If it is too high, treat with an appropriate surface damproof membrane (Wetstop®) or allow to dry.

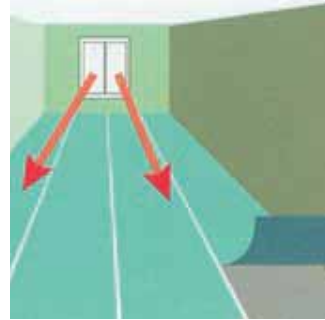
Under-floor heating

The heating should be switched off for 48 hours before. After installation bring the temperature up gradually over several days.

Laying Chocflex sheet

Store floorcoverings at room temperature for a minimum of 24 hours before installation. To guarantee problem-free installation, the sub-floor, room and adhesive should be a minimum of 15°C.

Step 1



Cut the sheet to length, leaving an excess of at least 5cm. The sheets should be laid over the whole surface with butt joints in one direction (following the direction of the arrows on the back of the sheet). Note the batch number and consecutive roll numbers! The seams should run in the same direction as the main source of light.

Step 2



Trim off surplus material along the wall.

Step 3



Mark the position of the first sheet in pencil on the floor.

Step 4



Fold the sheets back onto themselves with the backing uppermost and spread the adhesive with a notched adhesive trowel. Follow the manufacturer's recommendations regarding coverage, drying times, open times etc.

Step 5



Unroll the first sheet following the markings on the floor. Stick down the consecutive sheets in the same way, placing them edge to edge with normal butt joints. Smooth out each sheet vigorously as it is laid with a roller, working away from the centre towards to edges to remove all air bubbles and ensure good adhesion to the sub-floor. Proceed quickly with installation in the second half of the room.

Step 6



Trim off surplus vinyl along the walls and skirting boards with a fine blade and smooth out vigorously.

Step 7



Once finished, smooth the entire floor again with a roller.

N.B. Complaints will not be accepted once the fourth sheet has been laid.

Laying Chocflex Tiles

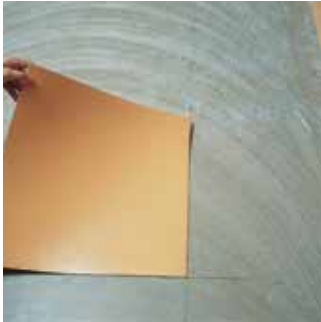
Preparation is the same as for CHOCFLEX sheet. Spread the tiles out over the whole area over which they are to be laid, checking that they are in perfect condition and that the colours match.

Step 1



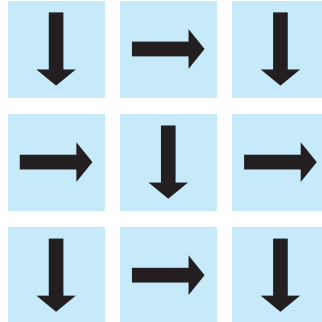
Mark two right-angles lines at the entrance to the room, taking care that for the edge tiles, a distance of just over half a tile or half a tile to the wall is taken into account.

Step 2



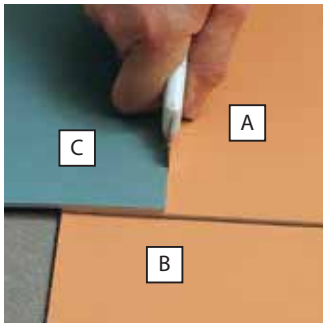
Apply the adhesive with a notched adhesive trowel in accordance with the adhesive manufacturer's instructions. Only apply adhesive on as many tiles as can be laid after the drying time. Apply the first tiles in accordance with the markings. Smooth out vigorously. Tiles must be permanently bonded.

Step 3



Continue to apply adhesive and lay the tiles in a chessboard pattern. Make sure the joints are tight. Always press tiles in firmly.

Step 4



Edge tiles: Lay a whole tile (A) on a tile in the last row laid (B). Lay a tile (C) over this and fix to the wall. This serves as a template. Tile (A) is cut along tile (C). Take care that tile (B) underneath is not scratched or damaged. Tile (A) now fits exactly into the edge.

Step 5



Continue using this method and end the work in one corner of the room. When finished, press the tiles down firmly once more.

Finishing the seams

Welding is to be done at least 24 hours after laying if a standard adhesive has been used. When using contact adhesive do this at least two hours after laying.

Cold welding with colourless solvents

The prerequisite for cold welding and its durability is a perfectly cut seam. The edges of the sheets are to be cut in such a way that they form a tightly butted joint. One day after laying, protect the seams with a thin, self-adhesive paper masking tape about 3cm wide, position across the joint and the length of the seam. Split the tape by passing a fine blade through the seam.

Insert the needle of the bottle or tube through the seam at an even speed, exerting slight pressure on the bottle or tube, and fill the seam with cold weld solution.

Optimal welding will be achieved if the seam is slightly overfilled and, when finished, some of the cold weld solution is overflowing from the seam.

The masking tape should be removed immediately. Wait 24 hours before using the floor to allow the seam to set and prevent the dirt from entering it.

Note: Masking tape should always be used to prevent unsightly encrustations which, once present, cannot be removed.



Hot Welding

Welding rod of 4mm diameter is available for all floorcovering qualities in matching colours (see table, CHOCFLEX welding rod).

Step 1



Step 2



Lay the sheets edge to edge with normal butt joints. Chamfer the seams to a V or U shape (3mm wide, 1.6mm deep) using an electric groove maker.

Step 3



Step 4



It is preferable to use manual welding equipment in small spaces, but welding machines in large rooms.

Step 5



Step 6



After cooling roughly cut the projecting part of the welding tape using a sliding block.

When the weld seam has set and completely cooled, trim the excess cleanly, flush with the surface, using a crescent shaped knife. This will prevent collapse of the welding seam.

Laying Chocflex Stairtreads

CHOCFLEX stairtreads are pre-fabricated stair coverings consisting of riser, stair-nosing, and stairtread. These are available in 11 linear metres rolls in two widths; 51cm wide for straight staircases or 102cm wide for curved staircases. 16 colourways are available, with

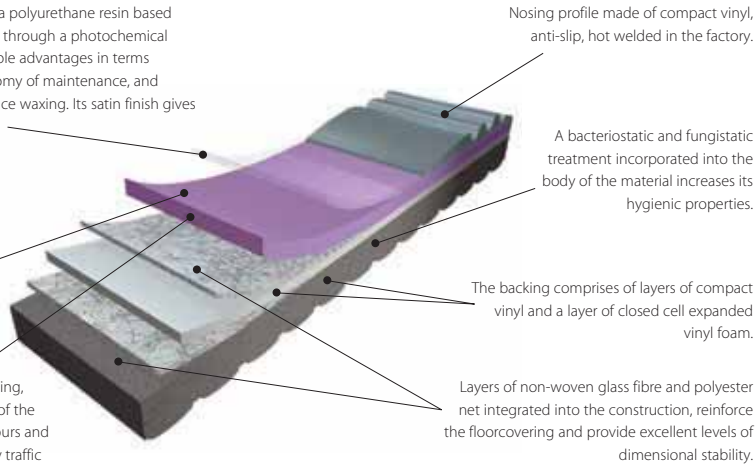
plain coloured, hot welded stair-nosings which are colour co-ordinating, but are always clearly visible for safety reasons. The riser and stairtread consist of CHOCFLEX in the T version (i.e. with a wear layer of approximately 0.8mm), and are therefore

suitable for heavy traffic. The VITNET® coating prevents the build up of dirt and stains, thus making cleaning easy. The stair coverings are designed for rounded stair-nosings with a minimum diameter of 12mm.

The **VITNET** soiling resistant treatment is a polyurethane resin based varnish, permanently fixed to the surface through a photochemical process. This protection offers considerable advantages in terms of resistance to abrasion, ease and economy of maintenance, and negates the need for the traditional surface waxing. Its satin finish gives a clean look and minimises surface glare.

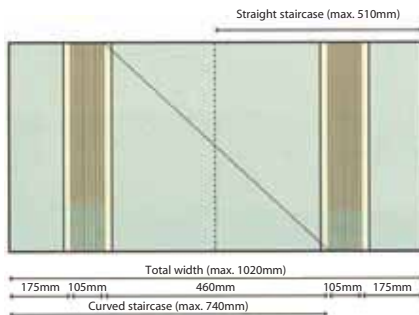
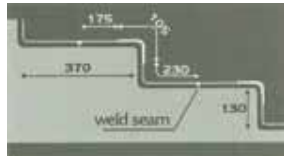
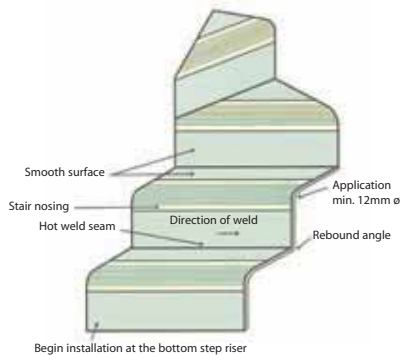
The textured surface also contributes to the ease of maintenance whilst reducing the risk of slipping.

Composed of a thick, compact vinyl coating, the wear layer guarantees the durability of the floorcovering and the strength of its colours and designs in the most demanding of heavy traffic environments.



Treatment of seams

Special staircases in exits to flats/residential care homes.



As for sheet and tiles, the sub-floor should be smooth, dry, clean and level. Worn and uneven areas must be made level. The ground level temperature should be a minimum of 15°C. The angle of the edge of the step should be rounded with a minimum diameter of

12mm and no overhanging lippings. On a straight staircase, the step edges should be parallel. If the sub-floor is very absorbent it should be pre-treated with neoprene priming compound, using a smooth spatula or a brush.

Pre-cut all CHOCFLEX stairtreads to the required length, allowing an extra 5cm for trim, and store them flat.

Note: When laying curved staircases, it is advisable to use a stair mitre rule so that the dimensions of the steps can be transferred accurately to the floorcovering.

Step 1



Step 2



We recommend the use of a high quality contact adhesive. Apply adhesive to 2 or 3 steps at a time depending on the open time of the adhesive recommended by the manufacturer. Apply contact adhesive to the sub-floor and back of the flooring material using a notched adhesive trowel and a brush.

Step 3



Step 4



Place covering on the step in such a way that 1/3 of the ridged part of the stair-nosing is placed against the riser and 2/3 on the tread of the step. This should be repeated, in perfect symmetry, on all the steps.

For improved adhesion, warm the CHOCFLEX stair-nosing with an industrial blow dryer just before finally fixing it in place.

Step 5



Step 6



Smooth vigorously, always starting from the stair-nosing, then the tread and lastly the riser.

Step 7



To weld the seam between the tread and riser, first groove the seam with a triangular blade or roughen with fine glass paper. Then hot weld with CHOCFLEX welding rod (4mm Ø). Trim off excess material at the sides of the stairs.

Cold weld method may be used if necessary.

When joining a top step to CHOCFLEX flooring on an upper landing, weld the two pieces together approximately 2-5cm away from the edge of the step.

Watertight tankings for Healthcare environments

Cove-formers should be fixed in place before CHOCFLEX is laid. Prepare and clean the floor and walls.

Step 1



Ensure that covings are clean and free from grease and cut them to the required lengths.

Step 2



Fix the profiles following the adhesive manufacturer's instructions. Mark in pencil the height of the vinyl skirting on the walls.

Step 8



Trim to the required height, following the pencil line.

Step 9



Hot weld the seams.

Step 3



Coat the floor with acrylic adhesive to within 10cm of the wall then lay the Chocflex sheet.

Step 4



Step 5



Fold back the edges of the sheet and apply contact adhesive to the back of the material and to the wall up to the pencil mark. Press the sheet firmly into place.

Step 10



Trim off surplus welding rod.

Step 6



Smooth out.

Step 7



To facilitate adhesion in the curves, warm the floorcovering. Cut into the corners of the walls, beginning at the base of the wall at an angle of 45°.

Tools Used



Cleaning and maintenance

Cleaning and maintenance

All floorcoverings in the CHOCFLEX range are treated with VITNET®. This is a protective PU varnish which is applied and fixed to the product in the factory by a photochemical process using UV rays. This coating helps CHOCFLEX retain its appearance over time. It makes maintenance easy, quick, economical and efficient. VITNET® also protect the flooring from a build up of stains and dirt, whilst reducing the risk of black heel marks.

The durability of the VITNET® coating provides effective protection from dust, dirt and wear. Care should be taken that suitable and adequately sized entrance systems are available, which should be cleaned and replaced regularly. To prevent damage to the protective varnish, pads or disks which are too abrasive (green or darker) should not be used in any circumstances.

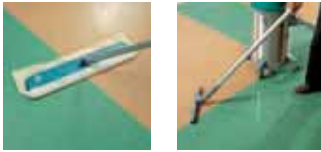
Treatment with floor polish is also unnecessary and could cause damage. Car and bicycle tyres, rubber wheels on furniture and rubber feet on equipment leave permanent marks on PVC floors due to chemical migration. This can be prevented by using stainless steel plates or something else to shield the floor from the rubber or any other contaminant.

Cleaning at the end of building work

Cleaning serves to remove all contamination from the building work, such as adhesive residues, paint etc. from the CHOCFLEX floorcovering. The use of special cleaners is required for this.

Periodic maintenance

Periodic cleaning is required from time to time to remove encrusted dirt. For this, dilute a neutral or alkaline proprietary cleaning agent with warm water according to the



manufacturer's instructions (preferably 1 : 3) and apply to the floor. Make sure the floor is thoroughly wetted.

Leave to work for 5 – 10 minutes and then go over the surface with a rotary machine (fitted with a drive disc and white or max. red pad disc or scrubbing brush) to remove dirt. The water is then removed from the floor with a water extraction machine and the floor rinsed with clean water. The use of 3 in 1 cleaning machines is recommended for large areas.

Regular maintenance

This refers to ongoing cleaning and care of the floorcovering over a long period. It enables the elimination dust and other dirt which could otherwise spoil the floor's appearance.



Daily sweeping is either dry, with a vacuum cleaner, or with a damp trapezoidal duster. Damp mopping devices, which are available in various working widths from 40cm to over 150cm, generally have an impregnated cover in a non-woven material or a fringed mopping head. The floor surface is damp mopped evenly in sections.

Regular washing: the extent of soiling will determine the intervals at which this method of cleaning should be carried out. A neutral cleaning agent should be added to the water used for cleaning.

Care of the floor in areas where a high standard of hygiene is required

Disinfection measures are called for in hospitals, Doctor's practices and other healthcare areas. Cleaning in these areas will be determined by the hygiene officer or infection control manager according to the disinfection measures and the hygiene standards required. Combined cleaning and disinfecting agents will be used for the floor in most cases. It is no longer permissible to mix cleaning agents and disinfectants.

Removing stains

Black streaks can easily be removed with a sponge and cleaning agent or by using a soft cleaning pad (white or red), so as not to damage the VITNET® coating. Fresh paint can be removed with a soft cloth or clean, adsorbent paper soaked in white spirit.

Fresh adhesive residues or lubricating oil can be removed with a sponge or a soft cleaning pad (white or red) using a neutral cleaner. Old marks are difficult to remove. The most effective method is to soften the affected area with white spirit or a concentrated alkaline cleaner and then clean it with a soft cleaning pad (white or red)

Important: Never use products or tools which could scratch the surface of the floorcovering. Hard cleaning pads (green or black) and floor polish are unsuitable, and could damage the floor.

Chocflex welding rod

Sheet & Tile

Colourway Sheet & Tile	Colour Code	Welding Strip Colour	Product Code
bilbao			
Noir Charbon	80371	Beige	1020
Gris Tempete	80373	Green	5024
Nuage	80374	Grey	8025
Mediterranee	80375	Grey	8026
Mure	80377	Grey	8010
Framboise	80378	Blue	6025
Chatain	80379	Blue	6020
Santa Fe	80380	Magenta	7006
Peche	80381	Magenta	7004
Cacahuete	80382	Beige	1019
Vert Hit	80383	Orange	3015
Craie	80384	Orange	3012
Lagon	80376	Orange	3014

Welding Strip

Colourway Sheet & Tile	Colour Code	Welding Strip Colour	Product Code
crystal			
Mineral	65180	Grey	8004
Cactus	65196	Green	5004
Quartz	65202	Grey	8016
Midnight	65213	Grey	8005
Linen	65329	Beige	1010
Conker	65330	Red	2007
Pumice	65331	Beige	1013
Spray	65332	Blue	6015
Aloe	65333	Green	5023
Pacific	65334	Blue	6012
Violine	65243	Magenta	7002
Souci	65222	Orange	3002

Colourway Sheet & Tile	Colour Code	Welding Strip Colour	Product Code
granito			
Mink	52263	Beige	1005
Sky	52265	Blue	6005
Terracotta	52268	Red	2004
Dark Grey	52270	Grey	8002
Pale Grey	52271	Grey	8010
Alabaster	52308	Beige	1011
Mandarin	52310	Orange	3007
Glass	52313	Green	5010

Colourway Sheet & Tile	Colour Code	Welding Strip Colour	Product Code
riga			
Quartz	78356	Beige	1018
Desert	78357	Yellow	4002
Squash	78358	Red	2001
Rosehip	78359	Red	2005
Vellum	78360	Grey	8020
Blueberry	78361	Blue	6024
Hedgerow	78362	Green	5012
Banquise	78400	Grey	8004
Turquoise	78401	Blue	6029
Amethyste	78402	Magenta	7007
Vert Flash	78403	Green	5025

Sheet & Tile

Colourway Sheet & Tile	Colour Code	Welding Strip Colour	Product Code
uni			
Snowflake	50185	White	9001
Grey	50208	Grey	8002
Black	50252	Grey	8003
Canary	50337	Yellow	4005
Ginger	50338	Orange	3008
Oatmeal	50339	Beige	1009
Custard	50340	Yellow	4007
Fudge	50341	Orange	3010
Cinnabar	50342	Orange	3011
Lichen	50344	Green	5020
Verdigris	50345	Green	5007
Riviera	50348	Blue	6020
Lagoon	50349	Blue	6016
Rainforest	50350	Green	5021
Lake	50351	Blue	6017
Iris	50352	Blue	6013
Lead	50353	Grey	8022
Poppy	50354	Red	2008

Colourway Sheet & Tile	Colour Code	Welding Strip Colour	Product Code
valencia			
Mustang	79385	Grey	8028
Malachite	79386	Grey	8029
Fossile	79387	Grey	8027
Ocean	79388	Magenta	7005
Estuaire	79389	Blue	6028
Blue Glacier	79390	Blue	6026
Vert Pomme	79391	Green	5026
Lichen	79392	Beige	1009
Paprika	79393	Orange	3013
Cereale	79395	Orange	3016
Lime	79396	Yellow	4010
Cappuccino	79397	Beige	1021
Miel	79399	Beige	1023
Dunes	79398	Beige	1022

Colourway Sheet & Tile	Colour Code	Welding Strip Colour	Product Code
vancouver			
Shore	74304	Beige	1008
Mist	74305	Grey	8024
Air	74306	Blue	6021
Cedar	74307	Green	5005

Resistance to chemicals

Product Used	Contact Time	
	After 2 Hours	After 24 Hours
Acetic Acid	A	A
Concentrated Hydrochloric Acid	A	A
Citric Acid	A	A
Concentrated Formic Acid	C	C
Dilute Formic Acid	A	A
Concentrated Nitric Acid	C	C
Dilute Nitric Acid	A	A
Oxalic Acid	A	A
Concentrated Sulphuric Acid	C	C
Dilute Sulphuric Acid	A	A
Concentrated Ammonia	A	A
Caustic Soda solution	A	C
Hydrogen Peroxide	A	C
Methyl Alcohol	A	A
Ethyl Alcohol	A	A
Concentrated Iodine Alcohol	C	C
Dissolved Iodine Alcohol	B	C
Raw Burning Alcohol	A	A
Denatured Alcohol	A	A
Eosine	B	B
Betadine	B	B
Concentrated Chlorine Bleaches	A	A
Essence F - White Spirit	A	A
Methyl, Ethyl, Ketone, Acetone, Ether, Formol	A	B
Potassium Permanganate, Xylene, Toluene	C	C
Trichlorethylene	C	C
Cooking Oil, Milk, Coffee, Tea, Butter, Wine	A	A
Tomato Puree	A	B
Mustard, Fruit Juice, Beer, Vinegar, Chocolate	A	A
Oil (Motor oil)	A	A
Wax (black)	B	B
Fat	A	A
Ball Point Pen, Felt Tip Pen	B	B
Ammonia Cleaning Agents	A	A
Lipstick, Make-up	A	A
Hair Dyes	C	C

A – Resistant
 B – Stains may be removed with alcohol or white spirit
 C – Not resistant (causes discolouration)



Chocflex – The easy care acoustic vinyl



CHOCFLEX is the ideal solution for heavy traffic areas in environments such as schools, hospitals, residential care homes, factories, shops, corridors, reception halls, staircases, etc. where durability, sound absorption, easy cleaning and low maintenance are key considerations.

CHOCFLEX N – Standard Chocflex.

CHOCFLEX T – Thicker than standard Chocflex – particularly for heavy traffic.

Sheet	N	T
Roll Width	150cm (4'11")	150cm (4'11")
Roll Length	30 linear metres (45m ²) 98'5" length (484.4 sq. feet)	30 linear metres (45m ²) 98'5" length (484.4 sq. feet)
Total Thickness	3.45mm	3.55mm
Wear Layer Thickness	0.62mm	0.75mm
Total Weight	2.500kg per m ² (0.57 lbs per sq. ft)	2.650kg per m ² (0.6 lbs per sq. ft)
Acoustic (NRA) Classification	ST3	ST3
Tiles	N	T
Dimensions	50cm x 50cm (19.7" x 19.7")	50cm x 50cm (19.7" x 19.7")
Packaging	20 tiles per box (5m ²) (53.2 sq. ft)	20 tiles per box (5m ²) (53.2 sq. ft)
Total Thickness	3.45mm	3.55mm
Wear Layer Thickness	0.62mm	0.75mm
Total Weight	2.500kg per m ² (0.57 lbs per sq. ft)	2.650kg per m ² (0.6 lbs per sq. ft)
Acoustic (NRA) Classification	ST3	ST3
Stairtreads	For Straight Stairs	For Curving Stairs
Roll Width	51cm (20.07")	101cm (3'3")
Roll Length	11 linear metres (36'11")	11 linear metres (36'11")
Total Thickness (not including stair nosing)	3.55mm	3.55mm
Wear Layer Thickness (not including stair nosing)	0.75mm	0.75mm

Performance Criteria

NF UPEC certification	U3 P3 E2/3 C2 ⁽¹⁾ • Plain design NO 308-005.100/00 • Pattern design NO 308-007.100/00	U4 P3 E2/3 C2 ⁽¹⁾ NO 308-006.100/00 NO 308-008.100/00
Euroclass	N – PV No. RA06-0431B	T – PV No. RA06-0431A
Antistatic Rating NFP 62001/1996 – PV NO 17503010	Class 2	
Vertical Electrical Resistance	< 2 x 10 ⁹ ohms	
Light Fastness	≥ 6	≥ 6
Dimensional Stability	≤ 0.40%	≤ 0.40%
Impact Sound	LW19dB (A)	LW19dB (A)
Noise Reduction Certification	W = 0.05	W = 0.05
Photocured Anti-Soiling Treatment		
Bacterial Resistance	Bacteriocidal and Fungicidal treatment	
RAPRA Test	Wet coefficient of friction of 0.65 ⁽³⁾	




(1) Chocflex stairtreads are guaranteed U4P3 as long as sub-floor and adhesive conform to DTU 53-2.

(2) Do not use cleaning agents containing abrasives, which could damage the VITNET[®] coating.

(3) When used on a flat horizontal floor. The industry accepts that a coefficient of 0.4 should be achieved if slipping is to be avoided.

Areas of use

European Classification EN 685: 1996

Class	Symbol	Area of Use	Description
		Living	Areas for private use
21 22 23		Moderate General Heavy	Areas of low/occasional use Areas of average use Areas of high use
		Commercial	Areas for public and commercial use
31 32 33 34		Moderate General Heavy Very Heavy	Areas of low/occasional use Areas of average use Areas of heavy use Areas of intensive use
		Industrial	Areas for light industrial use
41 42 43		Moderate General Heavy	Areas where work is mainly sedentary with occasional use of light vehicles Areas in which work is mainly carried out standing Other industrial areas

Available As	Chocflex N	Chocflex T
Sheet	150cm (4'11") wide Rolls with 30 linear metres (98'5")	150cm (4'11") wide Rolls with 30 linear metres (98'5")
Tiles	50cm x 50cm (19.7" x 19.7") Packaging 5m ² (53.2 sq. ft) = 20 tiles	50cm x 50cm (19.7" x 19.7") Packaging 5m ² (53.2 sq.ft) = 20 tiles
Stair coverings	–	51cm (20.07") wide Rolls with 11 linear metres (36'11") 101cm (3'3") wide Rolls with 11 linear metres (36'11")
Wear Classification		
Living	23	23
Commercial	34	34
Industrial	42	42



Use area classifications

Selecting a floorcovering that will satisfy the actual or expected service requirements is essential if a product is to perform up to the end user's expectations. With so much product information now available, it is hardly surprising that selection can sometimes be difficult.

So in order to help the end user and/or the building designer make an informed choice, our products show the European use area classifications and the Agrément ratings. The Use Area Classifications can only be claimed if the products meet the requirements of the performance criteria which have been laid down. The Agrément rating is awarded by one of the Agrément assessment bodies and only after an independent assessment of the product, both in laboratory conditions and on site use.

A basic understanding of both systems is useful when making decisions on suitability

of products. A general guide to both systems follows:

European Classification EN 685: 1996

This European Standard describes the various levels of use area, the relevant icons and typical applications. These typical applications may vary from country to country as room usage varies and some applications may require a higher rated product.

The European system has three specific use categories, with sub-divisions based on type and intensity of traffic: see the chart on the previous page. Individual EN product specifications detail the performance and physical criteria that a product must meet to achieve the classification – and products can meet the criteria of all three groups. When a higher classification number is claimed, the product will meet all the requirements of the lower classes in that group.

Property	(French Term)	Symbol	Range
Wear	(Usure)	U	1-4
Penetration	(Poinçonnements)	P	1-4
Water Resistance	(Eau)	E	1-3
Chemical Resistance	(Chimique)	C	1-3

In 1987, the scheme for floorcoverings was revised, but still retained the basic concepts which made the scheme so useful. The revision, carried out in conjunction with the European floorcovering manufacturers, made the overall scheme more simple. As all vinyl floorcoverings achieved a **C2** rating when tested, it was, felt unnecessary to include this and the new system concentrated on the **U, P** and **E** ratings.

The new scheme was termed the **GWS system**, with **G** being the general classification ranging from 1 to 5 and being a combination of the previous U and P ratings. **W** indicates that the product can tolerate wet cleaning but not standing water, and **WS** indicates the product can tolerate standing water by having the joints welded.

The individual EN product specifications allow for products of different filler levels and abrasion resistance and define minimum overall and wear layer thickness for each classification. Homogeneous products, being 100% wear layer, are only classified using the overall thickness, although they will give a longer life expectancy than a comparable heterogeneous product of the same classification.

The Agrément System

The Agrément system, which originated in France, has been in use for many years. The ratings were based on four key physical properties and the results which the product achieved against a test criteria in each category, gave the overall rating. (The higher the number, the better the performance). The overall performance was then quoted as a UPEC rating and this system is still recognised today in France.

The **W** and **S** replace the previous E rating. A comparison of both ratings is as follows:
G5 is equivalent to **U₃ P₂**
G4 is equivalent to **U₃ P₃**
G5 is equivalent to **U₄ P₃**
 No **W** rating is equivalent to **E₁**
W rating is equivalent to **E₂**
WS rating is equivalent to **E₃**

The Agrément bodies produce a comprehensive listing of typical use areas which are too numerous to list here, together with the product rating required.

Chocflex®

Resilient vinyl flooring



A beautiful range of high performance carpet tiles specially designed for commercial interiors.

Hardwearing, waterproof and hygienic. All the benefits of resilient flooring with the safety and comfort of a carpet. Stylish designs.



High performance PVC acoustic flooring for specialist needs.

High performance entrance systems specifically constructed to remove dirt and moisture at the point of entry.

Tessera®

Think Outside the Square

A beautiful range of high performance carpet tiles specially designed for commercial interiors.

Flotex®

Engineered for Life

Hardwearing, waterproof and hygienic. All the benefits of resilient flooring with the safety and comfort of a carpet. Stylish designs.



BONAR FLOORS

The Hi-Performance Flooring Company

Bonar Floors Ltd

High Holborn Road, Ripley, Derbyshire DE5 3NT, UK

Tel. 00 44 (0)1 773 7441 21, Fax: 00 44 (0)1 773 7441 42, E-mail: enquiry@bonarfloors.com

www.bonarfloors.com

Chocflex®

Best in Class

High performance PVC acoustic flooring for specialist needs.

Coral® & Nuway®

Powerful Clean Off Systems

High performance entrance systems specifically constructed to remove dirt and moisture at the point of entry.